

Knit a mouse hat for a bauble

You will need:

- Fingering-weight yarn: 8–10g Grey; scrap of pink.
- 2 small buttons.
- Embroidery cotton: black; white.
- A set of 2.75mm double pointed needles.
- Tapestry and embroidery needles
- A bauble with a 18–20cm circumference.

Special techniques

Increasing the number of stitches by using the make one method – M1L, M1R. The left and right slanting description describes how the new stitch will appear from the right side.

Key

- Knit
- Purl
- Sl2tog, k1, pssso – slip 2 sts together, knit 1, pass slip stitches over
- M1R – make 1 st, right-slanting
- M1L – make 1 st, left-slanting
- Ssk – left-slanting decrease
- K2tog – right-slanting decrease
- No stitch

Tension

28 sts, 36 rows to 4in (10cm) over stocking stitch.

Hat

Brim

Using Grey yarn and the thumb method, cast on 57 sts. Arrange the stitches to work in the round.

ROUND 1: [K1, p1] 10 times, k17, [p1, k1] 10 times.

ROUND 2: K20, M1R, k7, sl2tog, k1, pssso, k7, M1L, k20.

ROUND 3: Knit.

ROUND 4: K21, M1R, k5, ssk, k1, k2tog, k5, M1L, k21.

ROUND 5: Knit.

ROUND 6: K22, M1R, k4, ssk, k1, k2tog, k4, M1L, k22.

ROUND 7: Knit.

ROUND 8: K23, M1R, k3, ssk, k1, k2tog, k3, M1L, k23.

ROUND 9: Knit.

ROUND 10: K24, M1R, k2, ssk, k1, k2tog, k2, M1L, k24.

ROUND 11: Knit.

Crown

ROUND 1: K1, ssk, [k6, ssk] twice, k7, ssk, k1, k2tog, k7, [k2tog, k6] twice, k2tog, k1. (49 sts)



ROUND 2: Knit.

ROUND 3: K1, ssk, [k5, ssk] 3 times, k1, [k2tog, k5] 3 times, k2tog, k1. (41 sts)

ROUND 4: Knit.

ROUND 5: K1, ssk, [k4, ssk] twice, k3, ssk, k1, k2tog, k3, [k2tog, k4] twice, k2tog, k1. (33 sts)

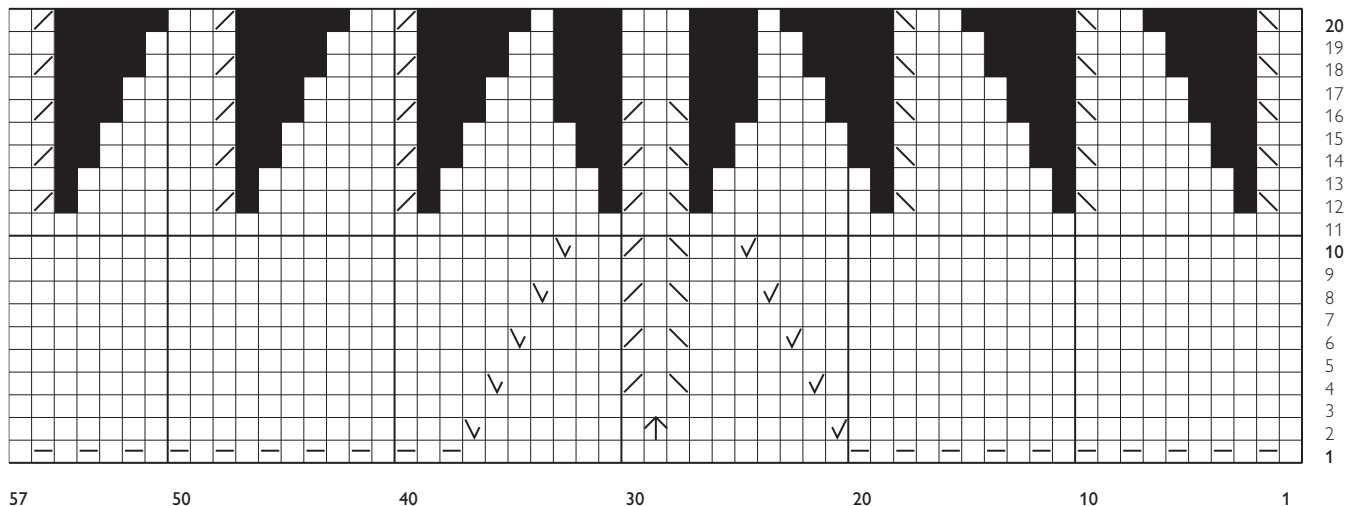
ROUND 6: Knit.

ROUND 7: K1, ssk, [k3, ssk] twice, k7, [k2tog, k3] twice, k2tog, k1. (27 sts)

ROUND 8: Knit.

ROUND 9: K1, ssk, [k2, ssk] twice, k5, [k2tog, k2] twice, k2tog, k1. (21 sts)

Cast off.



Ear (make 2)

Using Grey yarn and the thumb method, cast on 12 sts.

Arrange the stitches to work in the round.

ROUNDS 1–3: Knit.

ROUND 4: [K1, M1R, k4, M1L, k1] twice. (16 sts)

ROUND 5: Knit.

ROUND 6: [K1, M1R, k6, M1L, k1] twice. (20 sts)

ROUNDS 7–11: Knit.

ROUND 12: [K1, ssk, k4, k2tog, k1] twice. (16 sts)

ROUND 13: Knit.

ROUND 14: [K1, ssk, k2, k2tog, k1] twice. (12 sts)

ROUND 15: [K1, ssk, k2tog, k1] twice. (8 sts)

Cast off in pattern set and join the Front Ear to the Back Ear using mattress stitch or join the stitches using Kitchener stitch.

Inner Ear (make 2)

Using Pink yarn, two dpn needles and the thumb method, cast on 4 sts.

ROW 1: Purl.

ROW 2: K1, M1R, k2, M1L, k1. (6 sts)

ROWS 3–7: Work in stocking stitch patt set.

ROW 8: K1, ssk, k2tog, k1. (4 sts)

Cast off in the decrease pattern set.

Nose

Work as for Inner Ear.

Leaving a 10cm (4in tail), cut yarn.

Sew a line of running stitch along the outer edge of the Nose.

Draw tight – gathering the outer edges towards the centre.

Secure with a few small

back stitches.



Finishing

Sew in ends.

Using the photograph as a guide, using whip stitch, attach: the Inner Ear to the Outer Ear; then both Ears and the Nose to the hat.

Using embroidery thread, attach the button eyes and add white highlights to the eyes.

LuiseRoberts

Book designer and author.

FACEBOOK: Luise Roberts

RAVELRY USER NAME: LuiseRoberts

WEBSITE: www.luise roberts.com

COPYRIGHT © LUISE ROBERTS 2014.

All rights reserved. This pattern is for personal use only. No part may not be copied, reproduced, or distributed nor may the finished project or part of the project be manufactured for purpose of sale without written permission of the copyright holder.